

PROJECT INFORMATION

CIVIC ADDRESS - 1040 Moss St, Victoria, BC
CLIENT - Art Gallery of Greater Victoria
LANDSCAPE CONSULTANT - Durante Kreuk Ltd. Contact: Dylan Chernoff

PARKING COUNTS

- 26 TOTAL CAR STALLS
- 1 H/C PARKING STALL
- 25 STANDARD CAR STALLS
- 3 MOTORCYCLE / SCOOTER STALLS

BIKE PARKING COUNTS

- 12 CLASS A BIKE STALLS
- 38 CLASS B BIKE STALLS

TREE PROTECTION NOTES

- 1. Existing trees to remain, where possible and be protected during construction.
- 2. Any tree removals are to be compensated with the planting of garry oak trees or equivalent.
- 3. Refer to Arborist report for detailed tree information and tree protection details notes.

LANDSCAPE NOTES

- 1. Refer to Architectural and Survey plans of site dimensions.
- 2. Refer to Survey for any utility information.
- 3. All work shall meet or exceed the requirements as outlined in the Current Edition of the B.C. Landscape Standard.
- 4. Plant sizes and related container classes are specified according to the current edition of the B.C. Landscape Standard. For container classes #3 and smaller, plant sizes shall be as shown in the plant list and the Standard; for all other plants, both plant size and container class shall be as shown in the plant list. Specifically, when the plant list calls for #5 class containers, these shall be as defined in the BCNTA (ANSI) Standard.
- 5. All 'Soft Landscape Areas' are to be irrigated with a high efficiency design build irrigation system to IABC Standards, c/w rain sensor.
- 6. All trees to be staked in accordance with BCNTA Standards.

LEGEND

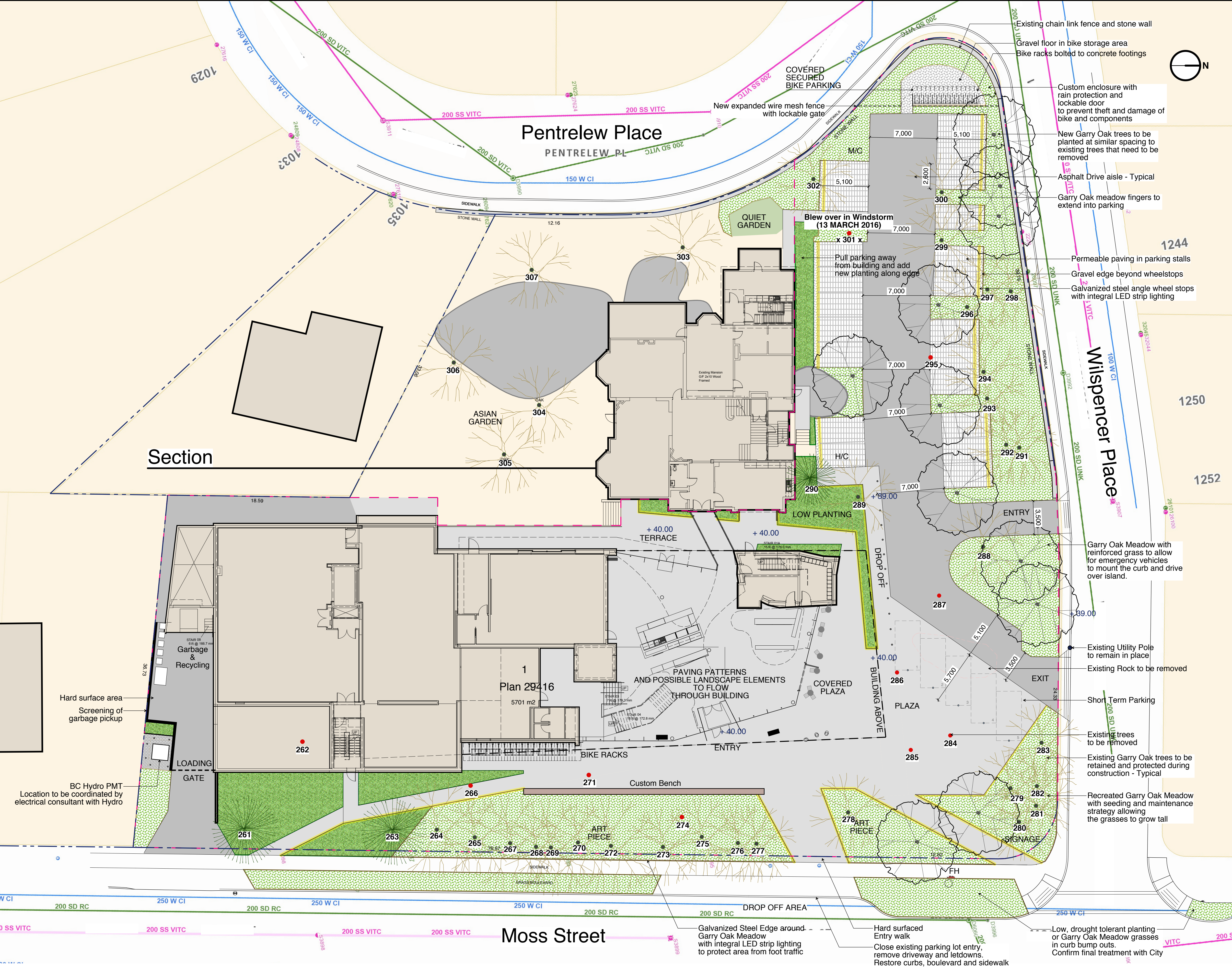
- GARRY OAK MEADOW
- PLANTING - West coast vegetation
- PERMEABLE PAVING
- PAVING TYPE 1
- ASPHALT
- GRAVEL
- ILLUMINATED GALVANIZED STEEL ANGLE

- EXISTING TREES (To be Retained)
- EXISTING TREES (To be Removed)
- NEW TREES
11 Garry Oak Trees or equivalent (Size determined by nursery stock)
Exact number of replacements to be reviewed on site to maximize number of replacement trees.

PROPOSED PLANT LIST

GARRY OAK MEADOW
We will be working together with a local expert to develop a seed mix and bulbs suitable for the art gallery site that can be used to succeed the existing lawn.

PLANTING			
Arctostaphylos uva-ursi	Kinnickinnick	#1 Pot	450mm O.C.
Gaultheria shallon	Salal	#1 Pot	450mm O.C.
Phyllostachys nigra	Black Bamboo	2.5m Tall	600mm O.C.
Polystichum munitum	Western Sword Fern	#2 Pot	600mm O.C.
Rhododendron spp.	Rhododendrons	#2 Pot	900mm O.C.



ART GALLERY OF GREATER VICTORIA

LANDSCAPE PLAN L01

SCALE 1/16" = 1' - 0"

ISSUED FOR 50% CD

DATE 31 AUGUST 2018